

PAN ASIAN REPERTORY

T · H · E · A · T · R · E

Shanghai Lil's

A NEW MUSICAL

Book & Lyrics by
Lilah Kan

Music by
LOUIS STEWART

Directed & Choreographed by
TISA CHANG

May 14 - May 23, 1998
The Cowell Theater
Fort Mason Center, Pier 2
Cowell Theater Box Office: 415-441-3687

PAN ASIAN REPERTORY THEATRE, founded in 1977 by Tisa Chang, celebrates the talent and creativity of professional Asian American theatre artists. An ensemble of exemplary actors have forged a repertoire of new plays which reflect the evolution of Asians in America and new interpretations of Asian and Western classics. As the largest professional producer of Asian American works, highlights include the epic **TEAHOUSE** from China, **GHASHIRAM KOTWAL** from India, **SHOGUN MACBETH**, **YELLOW FEVER**, and the musical commission **CAMBODIA AGONISTES** in collaboration with Ernest Abuba and Louis Stewart, which toured to international arts festivals in Cairo and Johannesburg in 1995. The company tours nationally and internationally, and has an outreach program and school matinees. Pan Asian Rep receives sustained recognition from the Asian American community, theatre and business arenas.

THANK YOU FOR JOINING US THIS EVENING!

TISA CHANG Artistic/Producing Director
presents the original hit musical

SHANGHAI LIL'S

Book & Lyrics
LILAH KAN

Music
LOUIS STEWART

Directed & Choreographed by
TISA CHANG

Set Design
ROBERT KLINGELHOEFER

Costume Design
TERRY LEONG

Light Design
RICHARD SCHAEFER

Slides
CORKY LEE

Sound Effects Design
DARRON L. WEST

Musical Director/Piano
ERIC K. JOHNSTON

Synthesizer
HEATHER EDWARDS

Stage Manager
ELIS C. ARROYO

Assistant Stage Manager
CHRISTINA CANON

CAST

(in order of appearance)

Chase
Lil
Sara
Jerry
Hyacinth
Peony
Mei-Mei
Wally

MICHAEL MINN
BLOSSOM LAM
MIMOSA
TED HEWLETT
EILEEN RIVERA
LIZA LAPIRA
DONNA ONG
MATT HYLAND

Pan Asian Rep employs members of Actors' Equity Association & SSDC

Place: Chinatown, San Francisco
Time: 1941 - 1945

This production is supported in part by the National Endowment for the Arts. **SHANGHAI LIL'S** is part of the Performance Series at the Cowell Theatre in Fort Mason Center which is supported by Grants for the Arts/San Francisco Hotel Tax Fund and the William and Flora Hewlett Foundation.

THERE WILL BE ONE TEN MINUTE INTERMISSION

PAN ASIAN REPERTORY THEATRE
under consideration
1998/1999 NEW YORK SEASON:

**CARRY THE TIGER TO
THE MOUNTAIN***
by Cherylene Lee

based on the true story of Vincent Chin
nov/dec 1998 • nyc

* commissioned by Contemporary American Theatre Festival

THE JOY LUCK CLUB
by Susan Kim • based on the novel by Amy Tan
apr/may 1999 • nyc

INFO 212.505.5655 BOX OFFICE 212.245.2660
EMAIL: PanAsian@aol.com WEBSITE: www.PanAsian.org

NATIONAL
ENDOWMENT
FOR THE
ARTS



DIRECTOR'S NOTES

SHANGHAI LIL'S is Pan Asian Rep's tribute to that quintessential American theatrical form - the musical - and to Asian American pioneers on the cabaret circuit. I grew up in New York City watching musicals on stage and in films. Musicals embodied the American Dream where everything good could happen: boy and girl can meet, fall in love, be thwarted in life and still end up happily ever after. Where else but in a musical can you dance with a mouse, or slosh around in the rain without catching pneumonia, or woo and marry a girl by riding up on a horse in a suit of armor?

Dancing replaces dialogue and in one dance number all personal crises and world issues can be resolved. **SHANGHAI LIL'S** choreography encompasses Latin influences, tap, ballet, Tai Chi and Peking Opera. English was my second language and I never talked in public till the 5th grade but I started dance classes at age 6. Movement allowed me to traverse terrain where verbal shyness precluded.

Pan Asian Rep has a demonstrated track record for excellence and professionalism in dramatic forms. With **SHANGHAI LIL'S** we salute those Asian American pioneer performers such as Larry Ching, Frances Chun, Toy Mar, Mary Mammon, Jack Mei Ling, Sono Osato, Yuki Shimada, Dottie Sun, Dorothy Toy, Noel Toy, Paul Wing, Tony Wing, Jadin Wong and American film legends - Fred Astaire, Ginger Rogers, Rita Hayworth, Gene Kelly, and others whose legacy is felt and revered today. **SHANGHAI LIL'S** also pays homage to the enduring strength of Japanese American internees and to all who saw action in diverse military campaigns during WWII.

Broadway, currently, has several shows featuring Asian American dancers and singers but this was not always the case. Together with the emerging generation of innovative, experimental, classic and comedic performers we represent a formidable phalanx to define 21st century consciousness and art forms.

Tisa Chang, Artistic/Producing Director

Pan Asian Rep extends Special Thanks to:

Howard Bauman & Miller Advertising, Philip Choy & Chinese Historical Society, Rev. Harry Chuck & Cameron House, Yuriko Doi & Theatre of Yugen, Chris Hirano & Jill Shiraki of Japanese Cultural Center of Northern California, Nancy Hom & Kearny Street Workshop, Sandy & Keith Johnson, Robert Kelley & Theatreworks, Gail Kong, Joan Lazarus, Katie Quan & UNITE, Helen Zia & AAJA.

MUSICAL NUMBERS

Act I

DREAM TIME HOUR	Chase
UNCERTAIN TIMES	Lil
GROWING UP IS SO EXCITING	Sara
IT'S REALLY A HOME	Mei-Mei
TANGO (Dance)	Mei-Mei & Chase
IS IT REALLY POSSIBLE	Chase & Mei-Mei
THE SNEEZING JINGLE	Jerry & The Flower Sisters
AT SHANGHAI LIL'S	Entire Company
BALLROOM WALTZ	Mei-Mei & Chase
IT'S TIME TO DANCE	The Flower Sisters

Act II

JERRY'S FAREWELL	Entire Company
WAR DUET	Jerry & Chase
WALLY'S LAMENT	Wally & Mei-Mei
JERRY'S FAREWELL (Reprise)	The Flower Sisters
I'M CONFUSED BY MY FEELINGS FOR HIM	Mei-Mei
TAI-CHI BALLET (Dance)	Sara & Chase
MOON SONG	Sara
PATRIOT'S SALUTE	The Flower Sisters, Lil & Wally
FINALE	Entire Company

GLOSSARY OF CANTONESE WORDS & PHRASES

gick saw gnaw	gets my goat
saw low gung	crazy old man
siu yeah	midnight snack
hom sup low	dirty old man
Nay hoe lah mah Chun seen nigh?	How are you Mrs. Chun?
hoe! hoe!	good! good!
moong moong day	spacey, spacey
cha siu	Chinese bar-b-que
saw saw day	crazy, crazy
won won day	dizzy, dizzy
lop sop	garbage
jeah jeah	older sister
muey muey	younger sister
moe mun tai	no problem

WORLD WAR II CHRONOLOGY

1939	September	Germany invades Poland, starting war.
1940	August	Germany launches all-out air blitz on England.
	September	Japan joins Rome/Berlin Axis. US men register in first peacetime draft.
1941	June	US freezes German and Italian assets in America.
	July	US and Britain freeze Japanese assets.
	September	Roosevelt orders Navy to fire on Axis raiders in American defense zones.
	December	Japanese attack Pearl Harbor, Midway, Wake, Guam, Philippines, British Malaya, Hong Kong and invade Thailand. US and Britain declare war on Japan. US declares war on Germany and Italy.
1942	January	26 nations sign United Nation pact.
	February	President Roosevelt issues Executive Order 9066 for the internment of Japanese Americans on the West coast.
	March	MacArthur assumes command of UN forces in the Southwest Pacific.
	May	WAAC law creates Women's Army Auxiliary Corps.
	July	US Navy establishes the WAVES.
	October	US Army joins Marines on Guadalcanal and Tulagi.
1943	March	14th Air Force set up in China under Chennault.
	May	American Forces invade Attu in Aleutian Islands.
	June	American planes bomb Tarawa.
	September	American Marines invade Nanumea in Ellice group.
1944	January	Allies land at Anzio; cross the Rapido River.
	June	US Marines invade Saipan in the Marianas.
	August	French troops enter Paris; Americans enter Reims, Nice and Verdun.
	December	Germans counterattack at Ardennes Forest to begin the Battle of the Bulge.
1945	February	Americans enter Manila; US Marines land on Iwo Jima.
1945	April	President Roosevelt dies; Italian partisans execute Mussolini.
	May	Heinrich Himmler, German Gestapo chief, commits suicide.
	July	US Army explodes experimental bomb in New Mexico Desert.
	August	American plane drops atomic bomb on Hiroshima and Nagasaki.
	September	Japan surrenders formally aboard USS Missouri in Tokyo Bay.

Research Assistant: Auric Abuba

AN OVERVIEW OF JAPANESE INTERNMENT

In the early months of 1942, in the wake of the wartime panic which followed the Japanese attack on Pearl Harbor, the United States government assembled and banished 112,000 men, women and children, the entire Japanese-American population of the three Pacific Coast States of California, Oregon and Washington, from their homes and society to deserted areas.

Key Assembly Centers: Puyallup, WA; Portland, OR; Mayer, AZ; Marysville, Sacramento, Stockton, Tanforan, Turlock, Mercer, Salinas, Pinedale, Fresno, Santa Anita and Pomona, CA.

Barbed wire ringed communities bearing the name of Relocation Centers took shape during the spring and summer of 1942: Tule Lake and Manzanar, CA; Poston and Gila, AZ; Minidoka, ID; Topaz, UT; Granada, CO; Heart Mountain, WY; Rower and Jerome, AK.

Justice Department Internment Camps: Kennedy and Crystal City, TX; McCoy, WI; Kooskia, ID; Santa Fe and Lordsburg, NM; Missoula, MT; Angel Island, Sharp Park and Tuna Canyon, CA; Florence, AZ; East Boston, MA; Ellis Island, NY.

Citizen Isolation Camps: Sante Fe, NM; Bismark, ND; Crystal City, TX; Moab, UT; Leupp, AZ.

Eight months after the bombing of Pearl Harbor, on August 7, 1942, all the West Coast Japanese-Americans had been rounded up, one way or another.

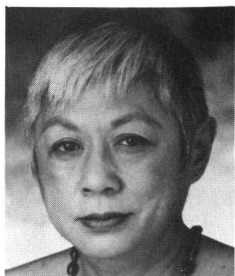
Compiled by Kannie Chung

WARNING

The photographing, video or sound recording of any performance, or the possession of any device for such photographing, video or sound recording within this theatre, without the explicit permission of the management, is prohibited by law. Violations may be punished by ejection and may render the offender liable for monetary penalty.

Fire Notice: The exit indicated by a red light and sign nearest to the seat you occupy is the shortest route to the street. In the event of a fire or other emergency, please do not run, WALK TO THE EXIT. Thoughtless persons endanger the safety of others by lighting matches or smoking in prohibited areas during a performance or intermission.

WHO'S WHO



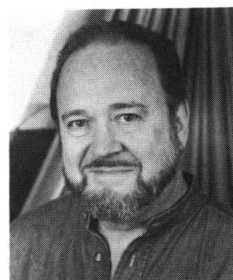
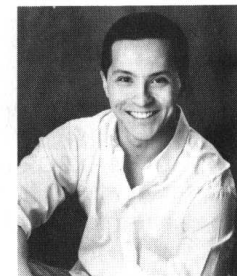
LILAH KAN (Book & Lyrics) Attended Francisco Jr. High and Galileo HS. Took classes at the San Francisco School of Ballet. Acted with San Francisco Inter Players in the 50's. NY acting debut: Frank Chin's **YEAR OF THE DRAGON**, American Place Theatre (televised for PBS's Theatre in America). Long time association with Tisa Chang's Pan Asian Rep as an actor (**LEGEND OF WU CHANG, FLOWERS AND HOUSEHOLD GODS, SUNRISE, MONKEY MUSIC**), was Geraldine Page's alternate in the Mirror Rep's revival of **RAIN**, and acted in **PAPER ANGELS** directed by John Lone. Has cooked professionally in Israel and numerous NY restaurants to pursue a life in theatre. Holds the rank of *shodan* in Zen (Japanese) archery; author of **Chinese Casserole Cookery** (Workman Publishing, NY). Presently works as a water aerobics instructor. Member of The Dramatists Guild. **SHANGHAI LIL'S** is dedicated to her sons, Jeremy and Jonathan Spear, and granddaughter Ariel.

LOUIS STEWART (Music) holds a Master of Music in Orchestral Conducting from the New England Conservatory of Music and a Doctor of Musical Arts from The Peabody Conservatory of Johns Hopkins University. Specializing in New Music, he has conducted and played premieres in New York, Seattle, Boston and Baltimore, and has guest conducted in the US and Southeast Asia. One of his many acclaimed compositions is **BALLET BEAT CAFE** which was premiered by the American Concert Ballet, and its concert version was performed recently in Boston. His recordings include **SLEEPWALKING IN SINGAPORE**, in collaboration with the Baltimore Improvisation Ensemble, and scores for two documentary films aired on PBS. He is the recipient of a Meet the Composer grant for the dance work **IMMUTABLE GROUNDS**. This project renews a series of collaborations with Tisa Chang, which began in 1973 with the musical composition for **THE RETURN OF THE PHOENIX**, and continued with **HOTEL PARADISO, APOLLO OF BELLAC, A MIDSUMMER NIGHT'S DREAM, THE PURSUIT OF HAPPINESS**, and **CAMBODIA AGONISTES**. He currently teaches at Berkeley College and Boston Conservatory.



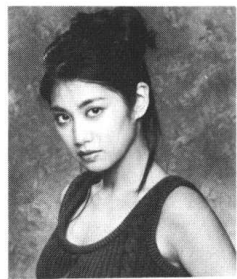
TISA CHANG (Director & Choreographer) went from a school production of **GUYS AND DOLLS** as a *Hot Box* chorine to perform the choreography of the late greats: Jack Cole, Jerome Robbins, Gene Kelly and Bob Fosse (in respectively, **A FUNNY THING HAPPENED ON THE WAY TO THE FORUM** national company, **THE KING & I** revival, **FLOWER DRUM SONG** and **SWEET CHARITY**, both stock). She also danced and acted on Broadway in **LOVELY LADIES, KIND GENTLEMEN, BASIC TRAINING OF PAVLO HUMMEL**, national company of **PACIFIC OVERTURES** and in films **AMBUSH BAY, ESCAPE FROM IRAN** and **YEAR OF THE DRAGON**. As a director she specializes in intercultural epics such as the bi-lingual **A MIDSUMMER NIGHT'S DREAM** for La Mama ETC, India's **GHASHIRAM KOTWAL**, China's **TEAHOUSE**, and Pan Asian Rep's **CAMBODIA AGONISTES** in collaboration with Ernest Abuba and Louis Stewart, which toured to Cairo and Johannesburg International Festivals in 1995. Tisa is active in public service and has been invited to India, Korea, Japan, Singapore, France and the former Soviet Union and is newly elected to the board of SSD&C, the national union for stage directors and choreographers. She dedicates this production to the memory of her brother, James, U.S. Marine Corps/Vietnam.

TED HEWLETT (Jerry) Broadway: **SHOGUN** Off/Off-Off Broadway: **DRAGONWINGS** (Lincoln Center Institute/ Kennedy Center); **THE MERCHANT OF VENICE, THE TEMPEST, SAINT JOAN** (Rayston Theatre Company). Regional Theatre: **A MIDSUMMER NIGHT'S DREAM, HENRY IV, PART I** (Shakespeare & Company); **DRAGONWINGS** (Fulton Opera House, New York State Theatre Institute); **CITY OF ANGELS, THE PIRATES OF PENZANCE** (Westchester Broadway Theatre), FILM: **HOOK, ARMY OF DARKNESS**. As director: **THE COMEDY OF ERRORS** (Shakespeare & Company); **CORIOLANUS** (assistant director, Royston Theatre Company).



MATT HYLAND (Wally) After many years away from show business, Matt originated the role of *Wally* this past spring. Since then, he has appeared as Charles Harding Decker in the mystery, **FLIRTING WITH DEATH**. Theatre credits include **THE STUDENT PRINCE** (West Palm Beach Musicarnival), **BOYS FROM SYRACUSE** (Charles Street Playhouse, Boston). He was the male vocalist with Sammy Kaye's Big Band, featured soloist at Radio City Music Hall, and M.C./vocalist with Loki Ontai's Polynesians as well as one of the jazz/pop quartet, **Vocal Point**. Other credits include **PASSION PLAY** as Joseph of Arimather.

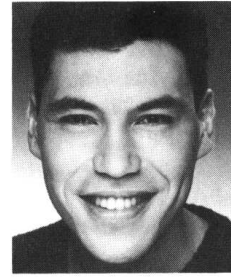
BLOSSOM LAM (Lil) Native born to the Hawaiian Islands, began her music studies at the age of eight. She won a Hawaiian Electric Music Scholarship while in high school. She continued her music studies at the New England Conservatory of Music in Boston, MA earning her BA in Music Therapy with Honors. She worked at the Bedford V.A. Hospital in Bedford, MA. Her most recent principal roles were in **EATING CHICKEN FEET** and the **FLOWER DRUM SONG**. She currently teaches voice and piano privately. She has appeared on TV as a principal in each of the following productions: **UNSOLVED MYSTERIES**, a Rice & Roses production about the Union's history and in an American Savings & Loan commercial. She is the leader of **The Crystals**, a vocal group who has performed in the Artists-In-The-Schools program from 1988. By special request they continue to offer their program at schools. She is a member of SAG, AFTRA and NATS.



LIZA LAPIRA (Peony) is a recent graduate of NYU's Tisch School of the Arts. She was a member of the CityKids National Touring Company for several years where she performed in venues such as Radio City Music Hall, Manhattan Center, and the Paramount; she also performed with them for the 5 living presidents at the "America's Promise Summit" at Independence Hall. She is on the original cast recording of **Warrior Sisters**, a new opera by Fred Ho, due out this August. Most recently she appeared on the *Rosie O'Donnell Show* singing back-

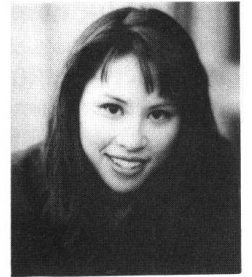
up for guest Malik Yoba. Liza would like to thank the faculty at CAP 21 and the Lapira family. She credits all she has and will accomplish to God.

MIMOSA (Sara) is a graduate of University of Southern California with a Bachelor of Music in Doublebass Performance. She has been in numerous productions at East West Players, including **A CHORUS LINE** (*Cassie*) & **PACIFIC OVERTURES** which she also did with the San Jose CLO & Music Theatre of Oregon. Since moving to NYC, she was seen in **ALDO & HIS MAGIC LAMP** (Vineyard Theater), **SAYONARA** (Fireside Theatre), **THE FALL GUY** (Playhouse 91) co-directed by her parents Shizuko Hoshi & Mako, **A VISIT FROM THE FOOTBINDER** (Lincoln Center), and most recently **LITTLE MISS BUDDAH** which she co-wrote with the all female all Asian writing/performing group **Killer Geishas A Go-Go**.



MICHAEL MINN (Chase) West Coast Debut! **SHANGHAI LIL'S** (Pan Asian Rep/NYC), **YOU CAN'T TAKE IT WITH YOU** (National Asian American Theatre Co.), **FUNNY GIRL**, **SINGIN' IN THE RAIN** (Carousel DT); **SWISS FAMILY ROBINSON**, **THE SECRET GARDEN** (Theatreworks/USA). TV: *The City, As The World Turns*, *NY Undercover*. Education: North Texas State, AMDA. Special thanks to Mom & Dad, Dick Andros and Alan Onickel.

DONNA ONG (Mei-Mei) Donna makes her debut performance as *Mei-Mei* in **SHANGHAI LIL'S**. She is currently finishing up a season with The Central Park Wildlife Theatre, has toured Europe as *Shelila* in the musical **HAIR** and has starred in the just released independent feature **YONI**. She has also done industrial and voiceover work and is currently on tour with the band **Noo VooDoo**. Donna gives thanks to God, GS and the home team.



EILEEN RIVERA (Hyacinth) is thrilled to be performing in her adopted hometown of San Francisco. In New York, Eileen performed the role of *Hyacinth* in Pan Asian Rep's return performance of **SHANGHAI LIL'S** last fall. Other NY theatre credits include: **ATTACK OF THE ELVIS IMPERSONATORS!** staged reading at the John Houseman studio theater, *Susan* in **A PORTRAIT OF THE ARTIST AS FILIPINO** at The Vineyard, and Pan Asian Rep's **CAMOBODIA AGONISTES**. INDEPENDENT FILM: **BYE, BYE PEARL OF THE ORIENT** and **TRIO SONATA**.

TV: *Law & Order*. She is also a teaching artist with Theatre for a New Audience. Trained at Boston University and San Francisco's School of the Arts. A shout-out to Diane Price and the Young People's Musical Theatre Company. Eileen most importantly thanks and cherishes her mom, Jean and her brother, Nick.

ELIS C. ARROYO (Stage Manager) has had the distinct pleasure of working with Pan Asian Rep on its productions of **FRIENDS**, **LETTERS TO A STUDENT REVOLUTIONARY**, **FAIRY BONES**, **THE DRESSING ROOM**, **CAMBODIA AGONISTES**, **THE INNOCENCE OF GHOSTS**, and **ALOHA LAS VEGAS**. He has also worked for Westchester Broadway Theatre, National Shakespeare Company, INTAR and The Public Theatre.

CHRISTINA CANON (Assistant Stage Manager) is pleased to make her ASM debut with Pan Asian Rep. Past projects with Pan Asian Rep include **THE INNOCENCE OF GHOSTS**, **SLANT**, and **SHANGHAI LIL'S**. Raised between New York and Hawaii, Christina has lectured and performed in children's Hawaiian

workshops for NYC Board of Education and Arts Connection, NYC. Recently, she has had the distinct pleasure of playing Emcee for the **1998 Hawaiian Slack Key Guitar Festival** at Symphony Space. Christina has performed at The Vineyard Theatre (Ludavika, **THE CAUCASIAN CHALK CIRCLE**), and The Sylvia & Danny Kaye Playhouse (Mother, **I LOVE NEW YORK**). Past roles include *Flora* (**27 WAGONS FULL OF COTTON**), *Lenny* (**CRIMES OF THE HEART**), *Martha* (**THE CHILDREN'S HOUR**) and *Maid/Flower Girl* (**MY FAIR LADY**). Christina currently studies at Hunter College, NYC where she will graduate with a BFA in Theatre and Music.

HEATHER EDWARDS (Synthesizer) is from the Bay Area and gave her first performance as a classical pianist at age 7. She graduated from Berklee College of Music in 1990. Heather has performed as a soloist, as well as with orchestras and bands of many musical styles including jazz and funk, along with her own compositions. Heather has recently toured South America with **PHANTOM OF THE OPERA**. Other musicals include **MUSIC MAN** (Pianist/Musical Director), **ANNIE** (Pianist/Synthesizer), and **FAHRENHEIT 451** (Pianist/Assistant Musical Director). Heather has also performed as an actress in theatre, film and television.

ERIC K. JOHNSTON (Musical Director/Pianist) has been with **SHANGHAI LIL'S** since serving as musical director for the premiere production last spring. Earlier this year, he music directed the New Jersey premiere of **john & jen** with Allegro Productions, where he has also music directed **YOURS, ANNE**, a musical based on **THE DIARY OF ANNE FRANK**, and where he has recently accepted a position as Resident Music Director. A native of Ohio, Eric was Resident Accompanist/Music Director for The Human Race Theatre Company in Dayton, Ohio, where some of his credits include **FALSETTOLAND, CLOSER THAN EVER, THE GIFT OF THE MAGI, THE ROCKY HORROR PICTURE SHOW**, and **THE FANTASTICKS**. Eric first became involved in musicals at the age of five, and has been accompanying musicals since he was twelve.

ROBERT KLINGELHOEFER (Set Designer) has been the Resident Designer at Pan Asian Rep for the last four seasons. He has designed ten productions including **AND THE SOUL SHALL DANCE, WILDERNESS, YELLOW FEVER, A DOLLS HOUSE, CAMBODIA AGONISTES**, and **PRIVATE LIVES**. Concurrently, Mr. Klingelhoefer is the Resident Designer for the 9th season at the Fulton Theatre Company in Lancaster, PA, where he has designed over 30 productions. His credits also include work for The Acting Company, Shakespeare Theatre, DC, Asolo Theatre Co., Cricket Theatre, Yale School of Music, Westside Theatre, Puerto Rican Travelling Theatre and NYS Theatre Institute. Mr. Klingelhoefer has had affiliations as Guest Artist or Adjunct Faculty member at the University of South Carolina, Montclair State College and Dickinson College.

TERRY LEONG (Costume Designer) has designed costumes for many TV commercials and Off-Broadway productions. Among Mr. Leong's numerous design credits are: Yoko Ono's **NEW YORK ROCK** at the WAP Theatre,

LOOKING FOR LOVE IN DARKNESS at the American Theatre for Actors, **WILTING'S** and **THE MISANTHROPE** for Staten Island College, **PRIVATE LIVES** for Pan Asian Rep, **THE TAMING OF THE SHREW** at the National Shakespeare Company, **DEATH OF A SALESMAN** at the Theatre Company, **DRACULA** at Theatrefest (Montclair State College), **AWAKE AND SING** for the Sackett Group at Westbeth Theatre and **THE SEAGULL** for the Cincinnati Playhouse. Mr. Leong has also designed costumes for Barbra Streisand and is mentioned in detail in Barry Dennen's new book, **MY LIFE WITH BARBRA A LOVE STORY**.

RICHARD SCHAEFER (Lighting Designer) began working with Pan Asian on the original production of **CAMBODIA AGONISTES**, and has been involved with almost every production since then; this tour allows him to continue with Pan Asian, even after relocating from NYC to Honolulu to become Production Manager for Honolulu Theatre for Youth. In addition to designing **FRIENDS, PRIVATE LIVES, RITA'S RESOURCES, WILDERNESS** and **YELLOW FEVER**, he has adapted the original designs for all recent Pan Asian tours. Recent designs have included **EATING CHICKEN FEET** and **KAI WAI OLA, THE LIVING WATER** (both directed by Kati Kuroda - a Pan Asian regular), **GREEN EGGS AND HAM**, and **ANYTHING GOES**.

DARRON L. WEST (Soundfx Designer) Design Associate and "usual suspect" at New York Theatre Workshop (NYTW). Company member and Soundscapes for Anne Bogart's Saratoga International Theatre Institute (SITI Co.). With NYTW: a myriad of productions including: **QUILLS, THE SECRETARIES**, and Jonathan Larson's **RENT**. With Bogart and SITI Co. numerous productions in the States and internationally of: **THE MEDIUM, SMALL LIVES BIG DREAMS, GOING GOING GONE, MS. JULIE** and most recently the world premiere of **CULTURE OF DESIRE** at Pittsburgh City Theatre. Other credits include multiple productions with: New York Shakespeare Festival/The Public, The Acting Company, Circle Repertory, The Vineyard, PS 122, The American Music Theatre Festival, Philadelphia Theatre Co., SoHo Rep and La Jolla Playhouse. He is a two time American Theatre Wing and Barrymore Award Nominee for Sound Design and Former Resident Sound Designer Actors Theatre of Louisville.

FRIENDS OF PAN ASIAN REPERTORY THEATRE

Donations received 9/01/97 - 3/13/98

Donations below \$50 cannot be listed due to
lack of space, but are greatly appreciated.

FRIENDS OF PAN ASIAN REPERTORY THEATRE

Donations received 9/01/97 - 3/13/98

Donations below \$50 cannot be listed due to
lack of space, but are greatly appreciated.

PACESETTERS

\$25,000 and up

National Endowment for the Arts
NYC Dept of Cultural Affairs
New York State Council
on the Arts

PRODUCERS

\$5000 - \$24,000

C.J. Huang Foundation
Fan Fox & Leslie R. Samuels
Foundation
J.P. Morgan & Co., Inc.
Time Warner, Inc.
AT&T Foundation

ANGELS

\$1,000 - \$4,999

Actor's Equity Foundation
American Express Company
Axe Houghton Foundation
CBS Foundation
New York Times Company
Foundation, Inc.
Philip Morris Companies, Inc.
Jeff & Suk-kun Chin
Joseph H. & Hallie R. Levie
Thomas Liu & Liko Enterprises Co.
Sybil & Alfred Nadel
Thomas & Jill Ruppel

PATRONS

\$250-\$499

Marion G. Hart, M.D.
Lilah Kan
Michael Lee
Michael Minn
Stephen Sondheim
Lu Yu

SPONSORS

\$100-249

Asian Cultural Council
The John-Vincent Peter Copani
Memorial Foundation for the Arts
Ying Chan
Donna Chancellor
Ted Chapin
Hsueh Tung Chen & Dian Dong
Tina Chen
Muzaffar Chishti & UNITE
William Craver
Ruby Davis
Bruce L. & Diane R. Gregory
Jane Harmon
Sheldon & Margery Harnick
Michael & Barbara Haven
Michael J. Hirschhorn & Jimena
Martinez
Lucia Hwong
Christopher Ing
Mary Yung Kantor
Woodie King, Jr.
Elaine Kingman &

Dong Kingman, Jr.
Sumi & Sam Koide
Dean & Mary Anne Lodmell
Marjorie Loggia
Roger A. Long
David J. Louie
Robert & Pamela Macht
Larry & Donald Marshall
Benjamin & Sherry Lynn Mordecai
Tamaki & Graney Ogata
Clara G. & Hironori Onishi
Ralph Samuelson
Dr. Carole Shaffer-Koros & Dr.
Robert M. Koros
Pamela & Peter Shrock
Simone Yen Song &
Joe Montagna
Jeremy Spear
Paul J. Spncer, Jr.
Hwi-Sook & George Taylor
Patricia & Ken Taylor
Margaret Yamamoto

SUPPORTERS

\$50 - \$99

Norma Abdulah
Jean Wood & Stanley Chang
Joan Lebold & Jerome A. Cohen
Bonnie & James Crown
Jim & Marsha Flock
Sandra Gong & Victor S. Sloan
Whitmore & Svea Gray
Dr. Peter & Jeanne S. Huang
Ralph & Barbara S. Italie

Gokmun & Beverly Jung
Arlene Kimata & Gary Kitahata
Namlyn R. Kong
Lisa A. Ledwich
Jason Ma
Marjorie Scribner
Jon & Barbara Shiota
Norma Yueh

IN KIND

David Henry Hwang &
Kathryn Layng

MATCHING

Citicorp/Citibank
Exxon Corporation
IBM
J.P. Morgan & Company, Inc.
Johnson & Higgins
The Chase Manhattan Bank
The Morrison & Foerster
Foundation
Mirror Company
The Times
Time Warner, Inc.

PAN ASIAN REP BOARD OF TRUSTEES

Donna Chancellor, Tisa Chang, Jeff Chin, Muzaffar Chishti, Esq.,
David L. Kim, Joseph H. Levie,
Sybil G. Nadel, Ed.D., and Ellen Yoshiuchi

PAN ASIAN REP HONORARY ADVISORS

Julie Azuma, Tina Chen, David Henry Hwang, Ming Cho Lee, Lu Yu, Simone
Yen Song, Esq., Ellen Stewart, and Patricia Taylor, Ph.D.

**PAN ASIAN REP SENIOR ARTISTS
and RESIDENT ENSEMBLE MEMBERS**

Michael G. Chin, Carol A. Honda,
Kati Kuroda, Ron Nakahara,
Natsuko Ohama, Keenan Shimizu, and Christen Villamor

PAN ASIAN REP STAFF

Artistic/Producing Director	Tisa Chang
Artistic Associate	Ron Nakahara
Communications Associate	Peggy Cheng
Business Associate	TanNa Young
Administrative Assistant	Jodi Lin
Photo Archivist	Corky Lee
Production Photographer	Carol Rosegg
Graphic Designer	Ken Chu
Auditors	Michael Lee & Co., CPA's
Legal Counsel	Hom & Hsiung
Administrative Intern	Greg Woo

Pan Asian Repertory Theatre
47 Great Jones Street
New York, NY 10012-1114
212/505-5655; Fax: 212/505-6014
PanAsian@aol.com
<http://www.PanAsian.org>